

Judging

OBRA Official's Training
Corvallis, Oregon
Jan 31, 2009

Seth May
sethmay@gmail.com

1. Safety

2. Fair Competition

3. Integrity

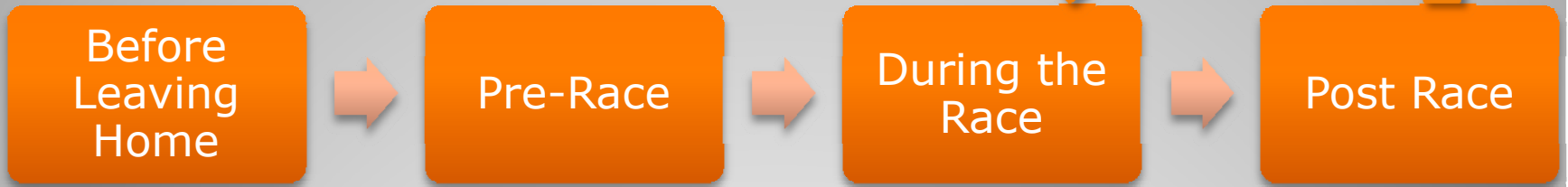
Priorities

1. The ability to record numbers (and other data) quickly and accurately.
2. A dedication to getting things right and making sure they correct.
3. The ability to deal with pressure and distractions while crunching data.
4. The ability to communicate well with others.
5. Adequate experience with the commonly used technology for judging.

Expectations

- Downstream Judge
- Judge
- Scorer
- Sprint & KOM Judge
- Timer

Roles



Order of Events

Before Leaving Home

Pre-Race

During the Race

Post Race

- Be fully alert: eat well, sleep well
- Check your check-list:
 - Maps, directions
 - Equipment: whistle, voice recorder, extra batteries, laptop, etc
 - Forms
 - Race flyer / race bible
 - Pens, pencils, highlighters, rubber bands
 - Paper & clipboard
 - Food & water
 - Proper clothing. Include your OBRA officials gear: shirt, vest, etc
- Give yourself time
- Record mileage

Order of Events

Before Leaving Home



Pre-Race



During the Race



Post Race

- Meet with Chief Judge to be given your assignment
- Locate start, finish, equipment, setup location, result posting location
- Attend the pre-race meeting for officials.
- Setup the finish-line area
 - Finish line banner (sign)
 - Generator / Power
 - Tents (EZ-ups)
 - Cameras
 - TV's
 - Printers
 - Tables
 - Chairs
 - Finish-line
 - Lap boards
 - Finish-line radio
 - Double check on distance marker (200m, 1k, etc).
- Check the lines of sight. Make sure you can see clearly.
- Double check all your equipment to make sure it works (voice recorder, pen, TV, Camera)

Order of Events

Before Leaving Home



Pre-Race



During the Race



Post Race

- Setup the finish-line area
 - Finish line banner (sign)
 - Generator / Power
 - Tents (EZ-ups)
 - Cameras
 - TV's
 - Printers
 - Tables
 - Chairs
 - Finish-line
 - Lap boards
 - Finish-line radio
 - Double check on distance marker (200m, 1k, etc).

Order of Events

Before Leaving Home



Pre-Race



During the Race



Post Race

- Check the lines of sight. Make sure you can see clearly.
- Double check your equipment to make sure it works
 - Voice recorder
 - Pen
 - TV
 - Camera

Order of Events

Before Leaving Home

Pre-Race

During the Race

Post Race

- Race Start: Check number placement
- Monitor all you equipment
 - Batteries charged
 - gas in the generator
 - time remaining on recorders (video and voice)
- Get the start lists. Input the data into the computer as needed.
- Know what is coming:
 - The race flyer/bible
 - Listen to the race radio
- If it is a multi-lap race, record lap times for each field
 - Then estimate:
 - When a field will finish or come through again?
 - Will one field overtake another field?

Order of Events

Before Leaving Home

Pre-Race

During the Race

Post Race

- For intermediary laps, record:
 - The field (cat 4s)
 - The race numbers for riders off the front
 - The count of riders in the field
 - The race numbers of riders off the back
 - If possible, record and place all the riders.
- For the finish:
 - Recorders (camera, voice) are running
 - Record the finish order of each rider using
 - the camera
 - your voice recorder
 - pen & paper
 - Make sure you record riders off the back as they come through

Order of Events

Before Leaving Home



Pre-Race



During the Race



Post Race

- Generate Results:
 - Generate an incomplete **Order of Finish**, from your own notes
 - Use the camera to supplement and correct your results
 - *EQUIPMENT DOES FAIL*- don't rely on it
 - Verify your results with the other judges. It's all too easy to miss a rider (even after reviewing tape). Verifying will help catch errors.
 - Generate the complete **Order of Finish**
 - Gather notes from the Follow Car Referee.
 - Riders off the front (OTF)
 - Riders off the back (OTB)
 - Riders who dropped out (DNF)
 - Penalties
 - Crashes
 - This information may affect the final placings for riders, so pay attention to it.
 - Generate the **Final Placing** using notes on lapped riders & penalties

Order of Events

Before Leaving Home



Pre-Race



During the Race



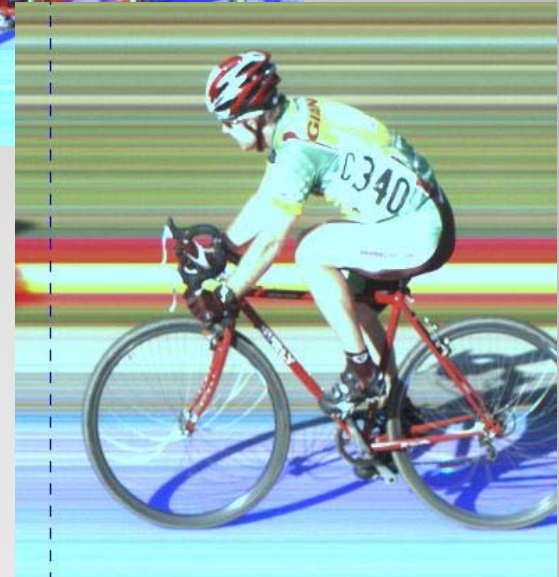
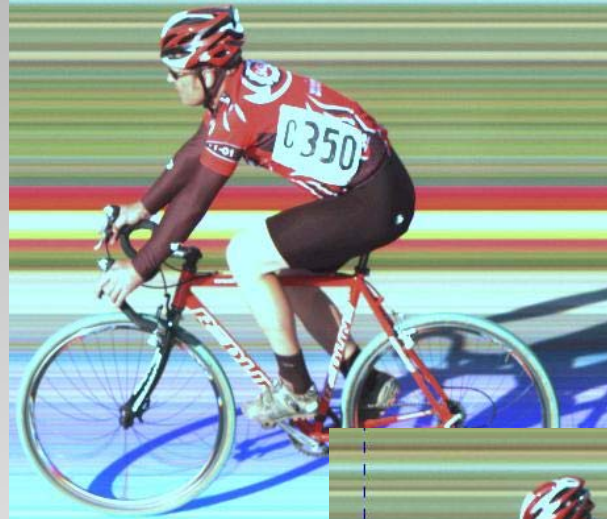
Post Race

- Results should be posted as soon as possible
- **Results are final 15 minutes after posting.**
- Race promoters will need finalized results ASAP in order to conduct an award ceremonies
- Printed results go to
 - Posting location
 - Chief Referee
 - Chief Judge
 - Promoter
- Electronic results will be sent to the OBRA webmaster and the OBRA mailing lists. Know which judge will handle this.
- Turn in mileage to Chief Referee.
- Collect all notes, electronic files, tape, print-outs, etc and give them to the Chief Judge.
- Break down the finish-line area

Order of Events

- **Good**

- Readable
- Not folded
- Not obstructed
- Stretched tight



Number Placement

- **Bad**
 - On Back



- On Belly



Number Placement

- **Bad**
 - Folded



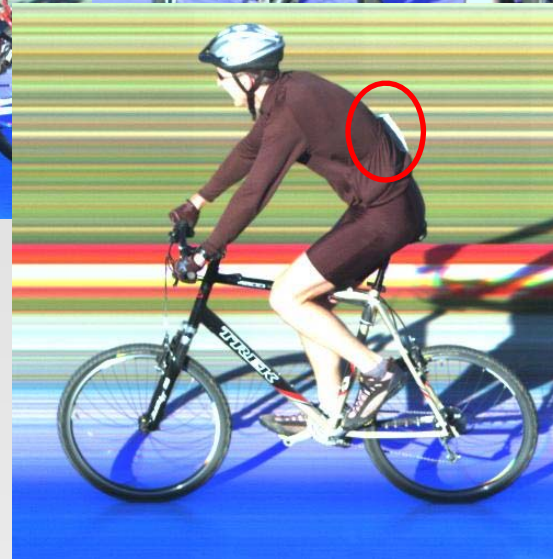
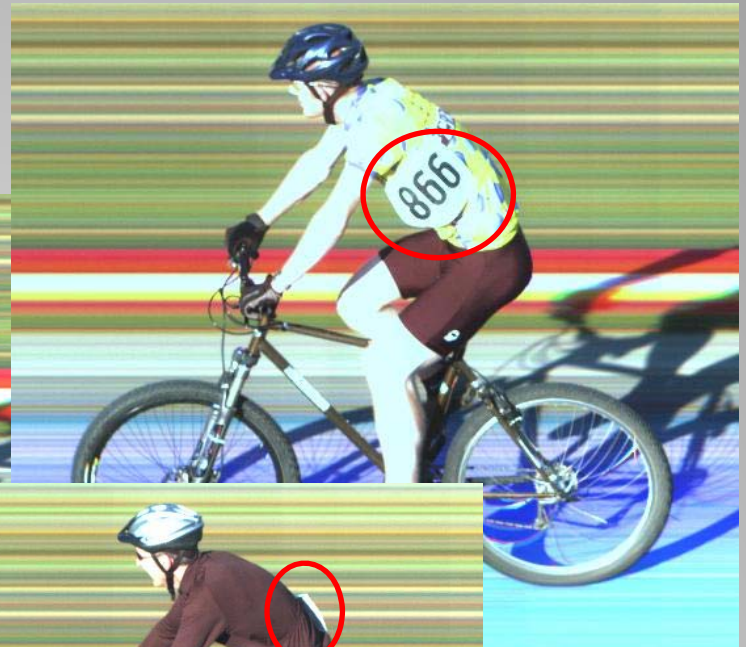
- Obstructed



Number Placement

- **Bad**

- Upside-down
- Sideways



- Wrong Side

Number Placement

- Sitting up
- Standing
- Obscured by riders



- Record:
 - Team kit or jersey color
 - Bike brand and color
 - Helmet color
 - Size of the rider
- Ask a teammate to help identify

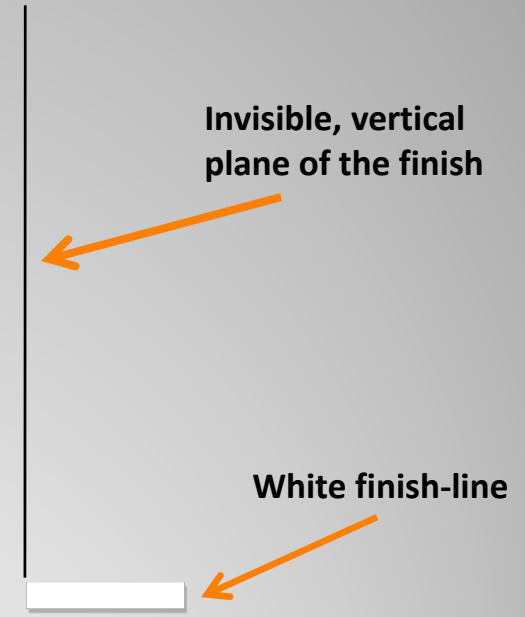
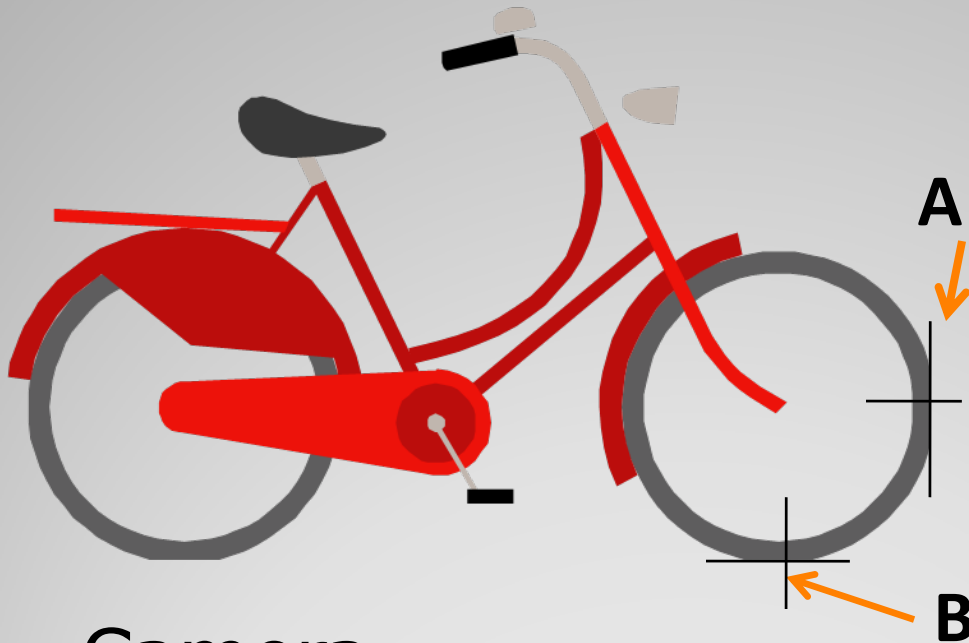


Other Number Problems

- Setup
 - Where will it be?
 - One lane or whole road?
 - How will you mark it?
 - Tape
 - Paint
 - Powder
 - Make the line as straight as possible

The Finish-line

- When is a Rider Finished



- A – Camera
- B – Timing strip

The Finish-line

- Make sure you
 - Have a start list
 - Know the number of riders
 - Know the number of laps
- Always count down in your notes
 - 25 laps, your first number will be 24
- **Keep your eyes on the race**
 - Avoid looking at your score sheet

Scoring

- Note Notation

- / or — A small gap between fields or riders
- // or = A large gap
- 213 Indicates loss of a lap
- | or ___ Missed the riders number
- P or F The Peleton or Field

Scoring Systems

- Vertical Scoring

Laps	24	23	22	21
	6	6	3	3
	3	3	6	101
	<hr/> 18	18	18	6
	42	42	42	18
	<hr/> <hr/> 85	<hr/> <hr/> 96	<hr/> <hr/> 96	42
	96	85	85	<hr/> 85
	101	101	32	96
	10	32	87	32
	87			87
	12			
		F	F	
		<hr/> 12	<hr/> <hr/> 12	F
	F	10	10	<hr/> 12
		<hr/> <hr/> 101		<hr/> <hr/> 10

Scoring Systems

- Horizontal Scoring

Lap 24	6 3 18 42 85 96 101 10 87 12 ----- F
Lap 23	6 3 18 42 96 85 32 ----- F 12 10 101
Lap 22	3 6 18 42 96 85 32 87 ----- F 12 10
Lap 21	3 (101) 6 18 42 85 96 32 87 ----- F 12 10

Scoring Systems

- Horizontal Scoring

- Or my variation using comma separators and count boxes for fields

Lap 24	6, 3 18, 42 85, 96, 101, 10, 87, 12 ----- 28
Lap 23	6, 3, 18, 42 96, 85, 32 ----- 27 12, 10, 101
Lap 22	3, 6, 18, 42 96, 85, 32, 87 ----- 26 12 10
Lap 21	3, 101 , 6, 18, 42 85, 96, 32, 87 ----- 26 12 10

Scoring Systems

- Continuous Vertical Scoring

<i>Lap 24</i>			85	18
6	F		32	<u>42</u>
3	<u><u> </u></u>		87	85
<u>18</u>	<i>Lap 23</i>	<u>F</u>		96
<u>42</u>	6	12		32
85	3	<u>10</u>		87
96	18	<u>101</u>		
101	42	<u><u> </u></u>	<u>F</u>	
10	<u>96</u>	<i>Lap 22</i>	<u>12</u>	
87	85	3	10	
12	101	6	<u><u> </u></u>	F
	32	18	<i>Lap 21</i>	<u>12</u>
		<u>42</u>	3	<u>10</u>
		<u>96</u>	101	
			6	

Scoring Systems

- Laps Up/Down Tally Sheet

- A quick way of determining who is on which lap
- When building your Final Order, this is invaluable!

Rider #	Laps Down
10	
101	
53	

- Lap Board Management

- Flip before leaders arrive
- Give yourself time to refocus for scoring

Scoring Systems

- All results are sent to the OBRA Webmaster
- Electronic results must be in a specific format
- See the print materials for specific information

Electronic Results